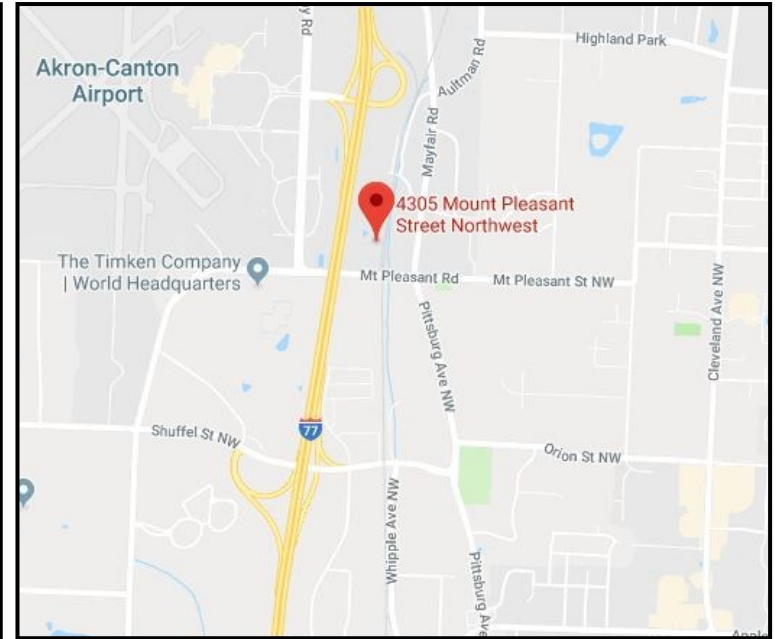


FOR LEASE

OFFICE SUITE

4305 MOUNT PLEASANT ST. NW - NORTH CANTON, OH 44720



INFORMATION:

Available space 1,277 SF
Year Built 1978
Lot Size 3.73 Acres
County Summit
Township City of Green
Interchange 1/2 mile to I-77
Parcel No 2900041

LEASING INFORMATION:

Rental Rate \$14.50 SF Full Service
Utilities Paid by Owner
CAM None
Availability Immediate
Parking Ample

DETAILS:

Fantastic location with great access to I-77
Spacious Rooms - See attached floorplan
Second Floor - with elevator service

For More Information, Contact:



Mobile: 330.418.1145

Office: 330.494.4411 Ext 101
tom@tomjacksonrealty.com

4706 Douglas Circle NW
Canton, OH 44718

Office: 330.494.4411 • Fax: 330.445.2306

www.TomJacksonRealty.com



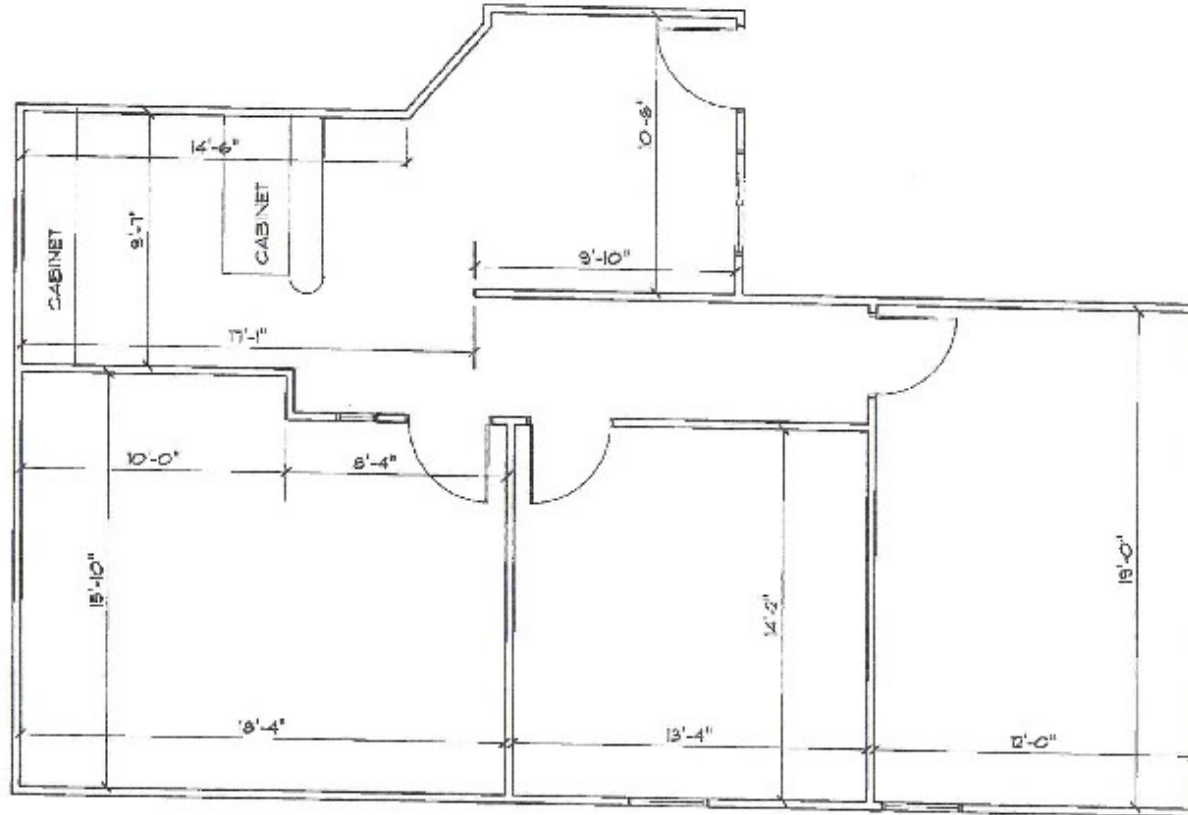
© 2018 Tom Jackson Commercial Realty. We obtained the information above from sources we believe to be reliable. However, we have not verified its accuracy and make no guarantee, warranty or representation about it. It is submitted subject to the possibility of errors, omissions, change of price, rental or other condition, prior sale, lease or financing, or withdraw without notice. We include projections, opinions, assumptions or estimates for example only, and they may not represent current or future performance of the property. You and your tax and legal advisors should conduct your own investigation of the property and transaction.

11/14/18

FOR LEASE

OFFICE SUITE

4305 MOUNT PLEASANT ST. NW - NORTH CANTON, OH 44720



4305 MT. PLEASANT ST NW,
SUITE 202